

Technical Specification CPCBIV+ Compliant Diesel Gensets (10kVA-320kVA)

| Genset kVA | Genset Rating (KW) | Alternator Phase Option | Engine Model | No. of Cylinder | BHP | Current (A) (1Ph/3Ph) | Displacement CC | Fuel System | Canopy Sizes L*W*H in mm. Height w/o Silencer | Fuel Tank Capacity in Ltr. |
|------------|--------------------|-------------------------|--------------|-----------------|-------|-----------------------|-----------------|-------------|---|----------------------------|
| 10 | 8 | 1Ph/3Ph | M2155G1 | 2 | 16.3 | 43.5/13.9 | 1.5 | Mechanical | 1750x900x1250 | 55 |
| 15 | 12 | 1Ph/3Ph | M2155G2 | 2 | 18 | 65.2/20.9 | 1.5 | Mechanical | 1750x900x1250 | 55 |
| 20 | 16 | 1Ph/3Ph | M3205G2 | 3 | 25.2 | 87 /27.8 | 2.0 | Mechanical | 1990x900x1330 | 75 |
| 25 | 20 | 1Ph/3Ph | M3205G3 | 3 | 30.5 | 97.8/31.3 | 2.0 | Electronic | 1990x900x1330 | 75 |
| 25 | 20 | 1Ph/3Ph | M3205G4 | 3 | 35.1 | 108.7/34.8 | 2.0 | Electronic | 1990x900x1330 | 75 |
| 30 | 24 | 1Ph/3Ph | M3205G5 | 3 | 40 | 130.4/41.7 | 2.0 | Electronic | 2325x980x1330 | 115 |
| 35 | 28 | 1Ph/3Ph | M3205G5 | 3 | 40 | 152.2/48.7 | 2.0 | Electronic | 2325x980x1330 | 115 |
| 40 | 32 | 1Ph/3Ph | M4275G1 | 4 | 51.8 | 173.9/55.6 | 2.7 | Electronic | 2325x980x1330 | 115 |
| 45 | 36 | 1Ph/3Ph | M4275G1 | 4 | 51.8 | 195.7/62.6 | 2.7 | Electronic | 2325x980x1330 | 115 |
| 50 | 40 | 3Ph | V4355G1 | 4 | 65.4 | 69.6 | 3.5 | Electronic | 2600x1130x1575 | 156 |
| 58.5 | 46.8 | 3Ph | V4355G2 | 4 | 75.5 | 81.4 | 3.5 | Electronic | 2600x1130x1575 | 156 |
| 75 | 60 | 3Ph | V4355G3 | 4 | 101.3 | 104.3 | 3.5 | Electronic | 3190x1225x1575 | 169 |
| 82.5 | 66 | 3Ph | V4355G4 | 4 | 101.3 | 114.8 | 3.5 | Electronic | 3190x1225x1575 | 169 |
| 100 | 80 | 3Ph | H4485G2 | 4 | 126 | 139 | 4.8 | Electronic | 3950x1350x1425 | 250 |
| 125 | 100 | 3Ph | H4485G1 | 4 | 156 | 174 | 4.8 | Electronic | 3950x1350x1425 | 250 |
| 160 | 128 | 3Ph | H6725G2 | 6 | 199 | 222.6 | 7.2 | Electronic | 4200x1400x1745 | 388 |
| 180 | 144 | 3Ph | H6725G3 | 6 | 223 | 250.4 | 7.2 | Electronic | 4200x1400x1745 | 388 |
| 200 | 160 | 3Ph | H6725G4 | 6 | 247 | 278.2 | 7.2 | Electronic | 4200x1400x1745 | 388 |
| 250 | 200 | 3Ph | H6935G1 | 6 | 310 | 347.8 | 9.3 | Electronic | 4750x1600x2000 | 425 |
| 320 | 256 | 3Ph | H6935G2 | 6 | 390 | 445.2 | 9.3 | Electronic | 4750x1600x2000 | 570 |

Gas Gensets

| Genset kVA | Genset Rating (KW) | Alternator Phase Option | Engine Model | No. of Cylinder | BHP | Displacement CC | Canopy Sizes L*W*H in mm. Height w/o Silencer | Weight |
|------------|--------------------|-------------------------|-------------------|-----------------|-----|-----------------|---|--------|
| 20 | 16 | 1Ph/3Ph | mGreen4335NG | 4 | 33 | 2.5 | 2285x1030x1255 | 857 |
| 25 | 20 | 1Ph/3Ph | mGreen4335NG | 4 | 33 | 2.5 | 2285x1030x1255 | 865 |
| 100 | 80 | 3Ph | mPower61565GC-100 | 6 | 156 | 7.2 | 3750x1300x1700 | 2210 |
| 125 | 100 | 3Ph | mPower61565GC | 6 | 156 | 7.2 | 3750x1300x1700 | 2250 |



Head Office : GSP Power Projects
B-2/16, Mohan Co-operative Industrial Estate, Badarpur, New Delhi-110044.
Tel.: 011-46800044 / 45,
Mob.: 8010010181, 93138 57889
E-mail: crm@gspower.com

Bhubaneswar : GSP Power Projects
Flat No-3/7, 3rd Floor, Anand Plaza Complex, Laxmi Sagar Square, Bhubaneswar-751006.
Mob.: 7894437613 / 614 / 618,
Email : bbsrb@gspower.com

Kolkata : GSP Power Projects
Suit F, Mission Court, 3rd Floor 25, R. N. Mukherjee Road, Kolkata - 700001.
Tel.: 033-40617059, **Mob:** 96749 88805,
Email : kolkatab@gspower.com

Jammu : GSP Power Projects
Lane No. 4, SIDCO Industrial Complex, Phase-II, Bari Brahmana, Jammu-181 133.
Mob: 9906068621, 8716920234,
Email : pss.jammu@gspower.com

Factory-1 : Plot No-62, Sec-25 Faridabad, (Haryana)-121004.
Factory-2 : Plot No-63, Sec-25 Faridabad, (Haryana)-121004.
Factory-3 : Lane No. 4, SIDCO Industrial Complex, Phase-II, Bari Brahmana, Jammu-181 133

www.gspgroup.co.in

FOLLOW US:   

Toll free no.
1800 419 1999
www.mahinrapowerol.com

Local Contact

mahindra ^{Rise}

powerol
by mahindra



GSP POWER PROJECTS

POWERING THE GROWTH JOURNEY OF THE NATION

Presenting **CPCB IV+ Compliant Gensets**



Range available for all Diesel & Gas Gensets 10kVA TO 320kVA



Low Maintenance



400 Sales & Service Touch Points



Product Life Cycle Support



Best-in-class Fuel Efficiency



Superior Performance



Excellent Block Loading Capacity



IOT Feature

Product Salient Feature

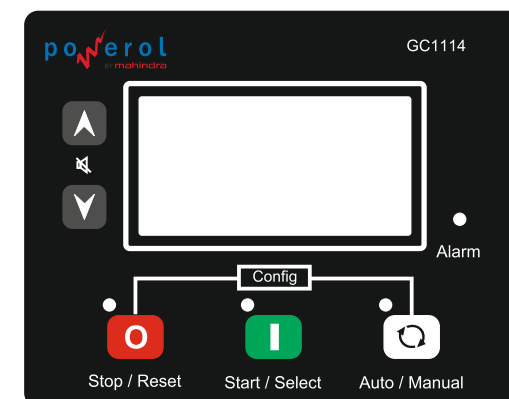
- Low operating & maintenance cost with service interval of 500Hrs/1 Year
- Wide Service Support Network across PAN India
- Supply to various rugged applications
- Proven engine in industry
- CPCB IV+ Complaint
- Remote Monitoring System as a standard feature
- Single Window Warranty Policy
- Sales, Service, Spares, Warranty under one umbrella
- Low footprint
- Standard warranty of 2 Years/5000 Hours whichever is earlier for complete genset
- 5C Warranty for 5 Years/5000 Hours whichever is earlier

Alternator

- Brushless type, screen protected, revolving field.
- Self-excited alternator conforming to IS/IEC 60034-1
- A reliable long life with superior class 'H' insulation
- Higher motor starting capability.
- Better transient response
- Ease of maintenance with integrated components and outboard Exciter/Rotating Rectifier
- Lighter and more compact with sealed bearings for lesser maintenance and longer life

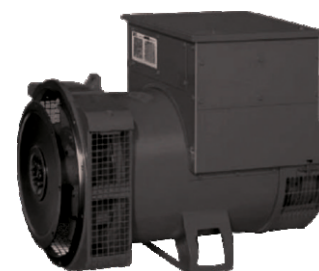
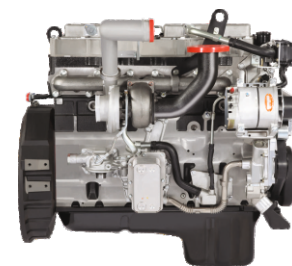
Controller

- SEDEMAC GC111X is a powerful ARM microprocessor based genset monitoring, metering and control system with full graphics LCD display for easy front panel access
- AMF, manual and remote start/stop modes for 1-ph & 3-ph gensets
- Backlit and full graphics display with power saving feature
- Engine parameter monitoring -Lube oil pressure, Engine coolant temperature, Fuel level, Battery voltage, Engine running hours
- AC Alternator parameter monitoring -Voltage L-N & L_L, Current, kW, kVA (Phase & Total), Frequency, kWH, PF
- Genset Protection:
 - Engine: Low lube oil pressure, High coolant temperature, Battery High/Low Volts, Fail to Start, Sensor failure, Low fuel level, Over speed
 - AC Alternator: Over/Under Voltage, Over/Under Frequency, Loss of AC sensing, Over frequency, Over Current, KW Overload, Unbalancing load
- Maintenance notification based on Engine Run Hour & due date
- Communication: USB port, RS485, CAN
- Fully configurable via front panel



Engine

- Mahindra Electronic Engine, In-Line 4 stroke, radiator cooled engine
- CRDI engine with Low fuel consumption
- Dry type air cleaner with service indicator
- First fill of lube oil, coolant & DEF
- Electrical starter motor with soft start system
- Battery charging alternator



Acoustic Enclosure

- Specially designed to meet stringent MOEF/CPCB norms
- Designed to operate in extreme climatic conditions in temperatures ranging from -10 deg to 55 deg without any external aid
- Superlative fade resistant paint can last longer in tough weather conditions
- Draw out type fuel tank for easy maintenance
- Fire retardant acoustic and insulation material (PU Foam/Rockwool) for better safety
- Lowest foot print
- Easy access for serviceable parts
- Pretreatment process with UV resistant powder coating of all parts
- After Treatment System (ATS) for Emission compliance
- Engine and alternator are mounted on a common MS fabricated base frame with AVM pads
- Ease in fuel filling (Outside Canopy)



Control Panel

- Powder Coated Control Panel for weather proof and long lasting finish. The control panel consists of the following parts:
- SEDEMACGC111X Controller
- Power Cable/ Bus bars with suitable capacity with incoming/outgoing terminals
- Indicating lamps for 'Load ON' and 'Set Running'
- Fuses/MCB's for control circuit safety protection
- MCCB of suitable rating with short circuit protections
- Battery Charger

Optional Accessories

- Cold Starting System (Temperature range upto -20 deg.)
- AMF/ATS/Sync. Controller/Sync. Panel
- PMG Alternator, Space heater, RTD/BTD

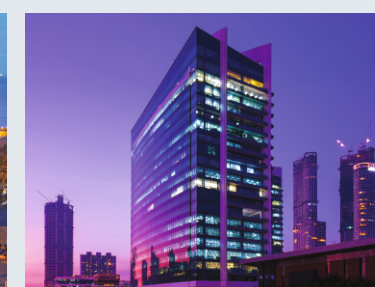
Applications



Clinics



Industries



Residences



Small Offices